

SEMI-DEDICATED SERVERS

WITH
EXCELLENCE HOSTING

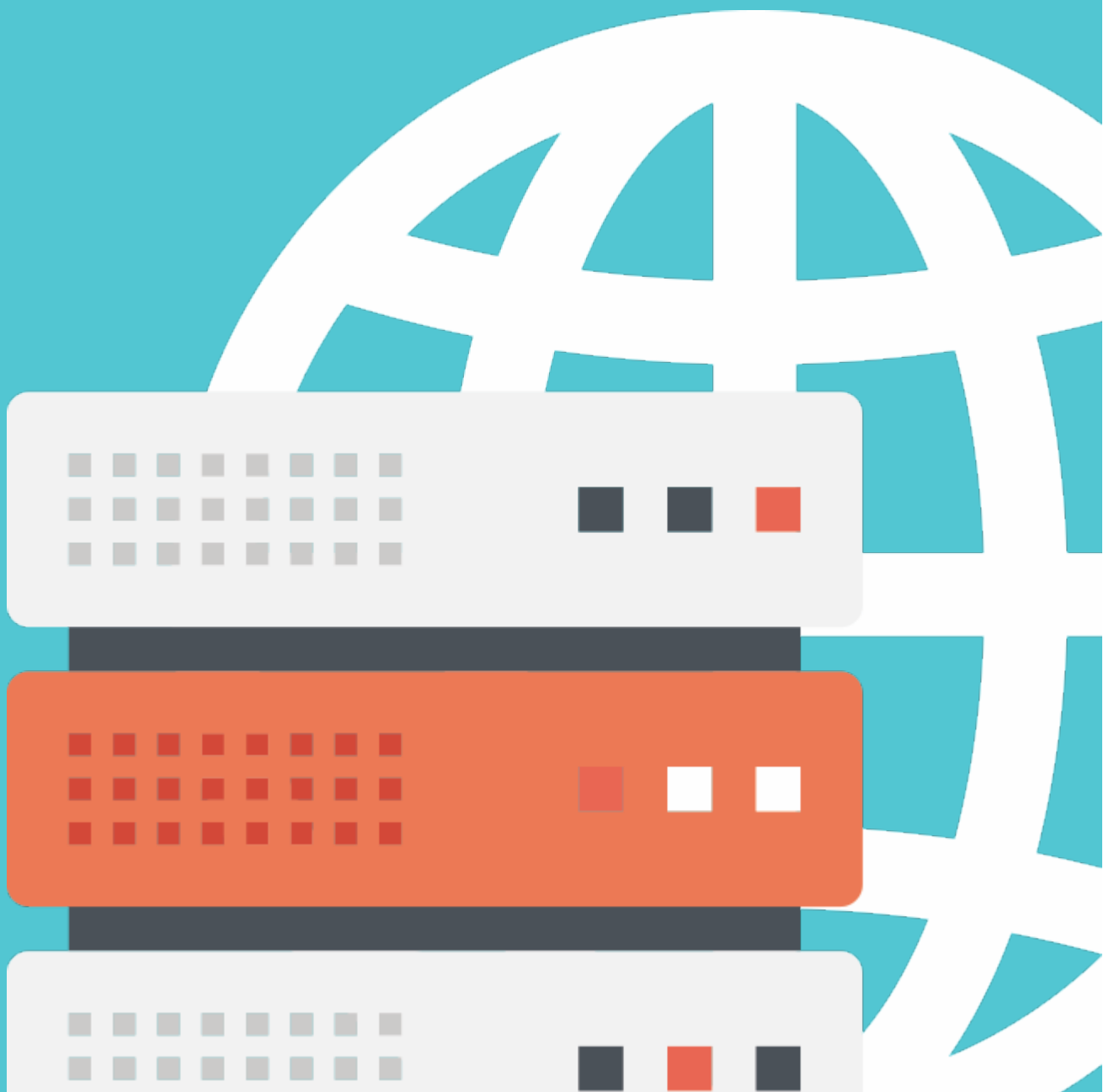




TABLE OF CONTENTS

WHY CHOOSE A SEMI-DEDICATED SERVER? 3

SEMI-DEDICATED SERVERS 4

SEMI DEDICATED 1 5

SEMI DEDICATED 2 6

OUR ADVANTAGES 7

JOIN OUR GROWING FAMILY 8

WHY CHOOSE A SEMI-DEDICATED SERVER?

In the web hosting hierarchy, semi-dedicated servers sit halfway between dedicated servers and regular hosting accounts, offering the best of both worlds.

Our semi-dedicated servers come pre-installed with Varnish and Memcached and offer native support for Git and SVN. You will be able to run multiple background processes at the same time and to set up both MySQL and PostgreSQL databases.

Built atop our innovative hosting platform, each semi-dedicated server configuration relies on the bulletproof ZFS-SSD combo. The ZFS file system allows for exceptionally effective file compression, whereas SSD drives are widely known for their lightning-fast data access speeds. This is the reason why there are neither file storage limitations nor I/O bottlenecks with Excellence Hosting.

The ModSecurity firewall, which involves an ever-expanding set of rules designed to protect your sites and applications, is enabled by default on all semi-dedicated servers. Plus, antivirus tools are running silently in the background, checking for rootkits and other exploits.

WHY Excellence Hosting:

- 24/7 Technical Support
- A 1-Hour Response Time Guarantee
- 99.9% Network Uptime
- 99.9% Service Uptime
- Antivirus Protection
- Multiple Daily Data Backups



SEMI-DEDICATED SERVERS

| | SEMI DEDICATED 1 | SEMI DEDICATED 2 |
|------------------|---|---|
| Price | \$20.00 / mo | \$30.00 / mo |
| Disk Space | Unlimited | Unlimited |
| Monthly Traffic | Unlimited | Unlimited |
| Hosted Domain(s) | Unlimited | Unlimited |
| CPU Core(s) | 1 core | 2 cores |
| E-mail Accounts | Unlimited | Unlimited |
| SSH/Telnet |  |  |
| IP Address | 1 | 1 |
| MySQL Queries | 90000/hour | 130000/hour |
| MySQL Databases | Unlimited | Unlimited |
| PgSQL Databases | 5 | Unlimited |
| Memcached |  |  |
| Memcached Memory | 64 MB | 64 MB |
| Varnish |  |  |
| Varnish Memory | 64 MB | 64 MB |



SEMI DEDICATED 1 PLAN

This server is the perfect option if you are switching from a regular hosting account. It can handle content-heavy websites without a problem.



| | |
|------------------|---------------------|
| Price | \$20.00 / mo |
| Disk Space | Unlimited |
| Monthly Traffic | Unlimited |
| Hosted Domain(s) | Unlimited |
| CPU Core(s) | 1 core |
| E-mail Accounts | Unlimited |
| SSH/Telnet | ✓ |
| IP Address | 1 |
| MySQL Queries | 90000/hour |
| MySQL Databases | Unlimited |
| MySQL Storage | Unlimited |
| PgSQL Databases | 5 |

| | |
|--------------------|--------|
| PostgreSQL Storage | 160 MB |
| Memcached | ✓ |
| Memcached Memory | 64 MB |
| Varnish | ✓ |
| Varnish Memory | 64 MB |
| Node.js | ✓ |
| Cron Jobs | 5 |

[MORE DETAILS](#)



SEMI DEDICATED 2 PLAN

This server is the ideal option for CPU-intensive apps and websites. It combines the simplicity of a traditional web hosting account with the power of a dedicated server.



| | |
|------------------|---------------------|
| Price | \$30.00 / mo |
| Disk Space | Unlimited |
| Monthly Traffic | Unlimited |
| Hosted Domain(s) | Unlimited |
| CPU Core(s) | 2 cores |
| E-mail Accounts | Unlimited |
| SSH/Telnet | ✓ |
| IP Address | 1 |
| MySQL Queries | 130000/hour |
| MySQL Databases | Unlimited |
| MySQL Storage | Unlimited |
| PgSQL Databases | Unlimited |

| | |
|--------------------|-----------|
| PostgreSQL Storage | Unlimited |
| Memcached | ✓ |
| Memcached Memory | 64 MB |
| Varnish | ✓ |
| Varnish Memory | 64 MB |
| Node.js | ✓ |
| Cron Jobs | Unlimited |

[MORE DETAILS](#)



OUR ADVANTAGES



SSD STORAGE

SSD drives provide better I/O rates and nearly 100 times faster access time.



DATA COMPRESSION (LZ4)

We rely on LZ4 compression to alleviate the I/O burden and improve the write.



BACKGROUND PROCESSES

Native support for scripts in the background with semi-dedicated servers.



PHP-RESERVED MEMORY

The semi-dedicated servers have 2 GB of memory reserved for PHP processes.



SIMULTANEOUS PROCESSES

100 - this is the maximum number of concurrent processes allowed per account.



MYSQL CONNECTIONS

20 concurrent MySQL database connections allowed per server.



PHP SETTINGS

Switch between different PHP versions and modify the php.ini file freely.



PYTHON SETTINGS

You can easily switch between Python 2.7, Python 3.5 and Python 3.7



BANDWIDTH REDUNDANCY

2-4 Gbps of bandwidth to steer clear of channel overload.



VERSION CONTROL SYSTEMS (GIT, SVN)

Our servers offer full Git/SVN support. No additional software is needed.



JOIN OUR GROWING FAMILY

We invite you to sign up and test our semi-dedicated servers for 30 days. You don't have to submit any credit card, debit card or PayPal account information upfront. Evaluate our services and make an informed decision before putting any money down.



See for yourself why thousands of other webmasters have chosen Excellence Hosting as home for their websites. Find out whether a semi-dedicated server is the right fit for your website.

START YOUR FREE TRIAL TODAY